



WATER SUPPLY PROTECTION

Find out if your property is located within a Water Supply Protection Area (IWPA). Land use decisions in these areas help shape the quality of our drinking water. By staying informed and taking simple steps, you're helping protect a vital resource for today and future generations.

Simple Steps That Help Protect Our Drinking Water

Recommended Practices

- ❖ Pump septic systems annually or as needed
- ❖ Store hazardous materials in original containers indoors
 - ❖ Keep fuel- or oil-using equipment inside
- ❖ Never dump hazardous materials on the ground or in drains
 - ❖ Clean up spills in garages and driveways promptly
 - ❖ Maintain vehicles to prevent leaks
 - ❖ Inspect and maintain heating fuel tanks
- ❖ Store fertilizers, manure, and deicing chemicals in leak-proof structures
 - ❖ Follow professional advice for lawn care

SITE_ADDR

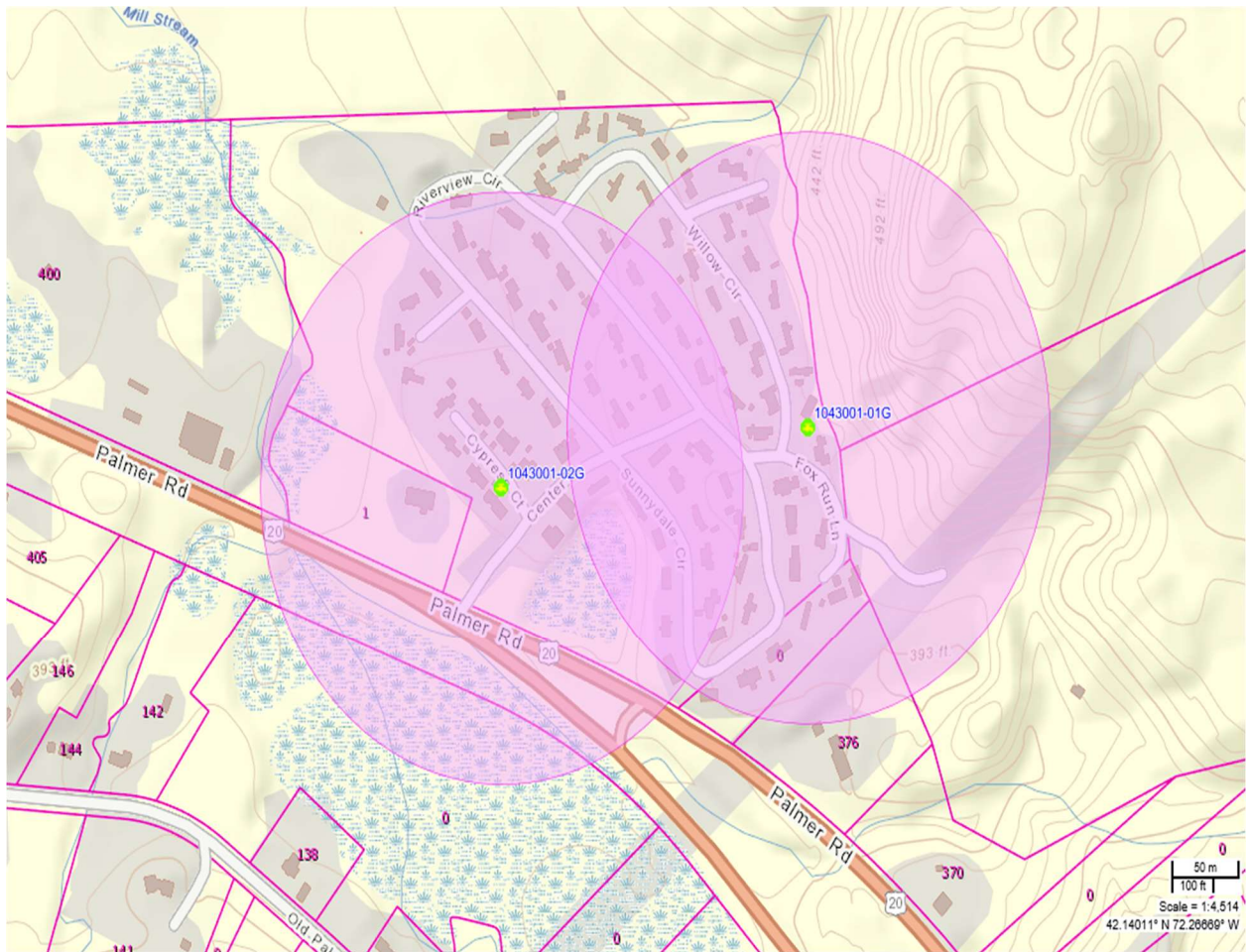
REAR PALMER ROAD

376 PALMER ROAD

0 PALMER ROAD

400 PALMER ROAD

0 DUNHAMTOWN PALMER RD



MEADOWBROOK ACRES

MASS DEP PUBLIC WATER SUPPLY ID# 1043001